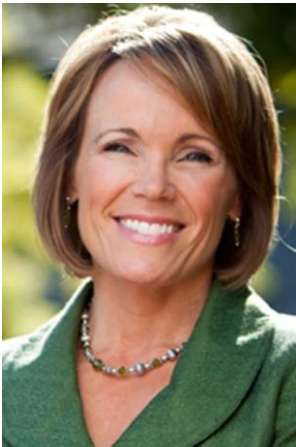


University of Utah
Professors Emeriti Club
NEWSLETTER

#5 2013/2014

January, 2014

February Luncheon Presentation
Nadine Wimmer, KSL News
February 11, 2014, Tuesday, 12:15 pm



Nadine (Deanie) Wimmer currently co-anchors KSL News at 5, 6, 6:30 and 10pm. She is also an Emmy award-winning reporter who produces a series of reports called "Staying Safe," to help parents protect their families from danger, injuries and other preventable problems.

Ms. Wimmer moved up the ranks in the KSL 5 newsroom as weekend anchor, political reporter, education reporter, and producer. She was born and raised in Salt Lake City and began her broadcasting career at KSL Television as a University of Utah intern.

Education has always been important to Nadine. She earned her Master's degree with an emphasis in political communication and Bachelor's degree in mass communication from the University of Utah. She attended a fellows program on education and journalism through the University of Washington.

Nadine won a regional Emmy award for her Staying Safe reports. She has received various awards from Utah Broadcasters Association and Society of Professional Journalists. She serves on the Governor's Literacy Commission and on boards at the University of Utah. Deanie is excited about her involvement in the [Read Today](#), KSL's reading incentive program. Read Today aims to boost reading scores by encouraging families to read together.

In her free time, she loves the outdoors and outdoor recreating in Utah's mountains and red rock country. She is often trail running, mountain biking, hiking, waterskiing and has recently taken up skate skiing. She's an avid reader and studies Spanish. Her favorite thing is to spend time with family. She's married to Phil Kirk, who works in law enforcement. They live with their two boys in Park City. *Edited from KSL Website*

Luncheon Menu

February 11, 2014

Luncheon reservations should arrive by mail to Hyrum Higham **before February 5, 2014.**

Parmesan Crusted Chicken with Supreme Sauce
Roasted Red Potatoes
Seasonal Vegetables
Baguettes and Fruit Breads
Three Berry Spinach Salad
Strawberry Roulades
Cranberry Spritzer/Water
Coffee and Tea Service

Vegetarian Option: Eggplant Parmesan, Lasagna Style
Fruit Plate Option

In Memoriam

Rita E. Fordham, spouse of Jefferson Fordham, Law
December 3, 2013

New Emeriti Club Member

Leonard Romney, Assistant Vice President for Administrative Services, January 1, 2014

Emeriti Doings

Jim McCloskey, Biochemistry, Chemistry and Pharmacy from 1974 - 2007, has just completed editing the manuscript of his oral history. The manuscript was initiated and accomplished by the Chemical Heritage Foundation library and the American Society for Mass Spectrometry to record details of his successful career in mass spectrometry.

The March Luncheon speaker will be **Bob Smith**. He will be discussing his work in Yellowstone. An interesting article in the Salt Lake Tribune makes an interesting preview to his upcoming presentation. <http://www.sltrib.com/sltrib/news/57082292-78/data-magma-farrell-yellowstone.html.csp>

NEWSLETTER BY INTERNET

Ryck Luthi has worked hard at providing the next newsletter the day after the luncheon. The purpose of getting the Newsletter out speedily is to provide members with timely information. However, the service provider, Yahoo, continues to frustrate his efforts with changes to the bulk email system. Ryck and several of us continue to work with Yahoo and also explore other service providers. We will solve the problem. If you receive the newsletter by email, you can help by making sure you do not have filter or spam detector set to delete "newsletter."

Still the fastest way to obtain each month's Emeriti Newsletter is via the internet.

Contact **Ryck Luthi** at ryckluthi@msn.com for Internet Delivery

Emeriti Hiking Group Remaining Schedule

Friday Jan. 24 Jordan River North Stroll Ohlsens 801-364-2159

The Hiking Group will be meeting in the near future to set a schedule for the calendar year of 2014. I expect the schedule will be ready and posted in the next newsletter.

EMERITI TOUR 2014: *Discover Croatia – Venice to Dubrovnik*
March 31–April 13, 2014



We now have confirmation that our **departure date** for Croatia is a **definite GO**—very good news! There is still space available for those who have been considering joining our group for this fabulous tour of an exceptionally beautiful and **unspoiled** corner of Europe, but have been preoccupied by the holidays—**food, fun, gatherings of family and friends**. An Emeriti tour can be described in much the same way! Think of it as Christmas in April—with travel the gift!

Everyone I have spoken to who has been to Croatia tells me that they come away struck by the **beauty** of the place. That characterization applies to both the **natural** and **manmade** environments. Take, for example, the town of **Split**: *On the left* you see the 13-16th century cathedral belltower rising above **Diocletian's 4th century imperial palace**. Abandoned after the fall of Rome, the palace eventually became a refuge for the local populace fleeing invading Slavs; a medieval town thus grew up within its walls; in the 18th century its remarkably preserved state helped inspire the neoclassicism of British architect Robert Adam. Today, as the most complete example of an ancient Roman palace, the building, along with the shops, restaurants, churches, and dwellings now housed

within it, comprise a **UNESCO World Heritage Site**.

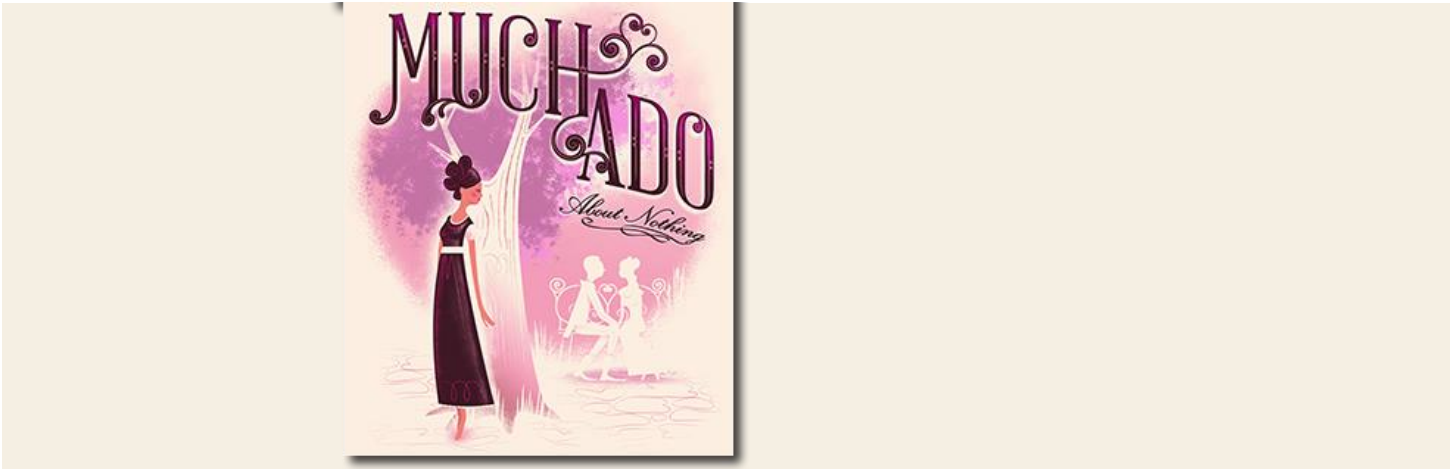
The **natural beauty** of Croatia likewise amazes—and not solely along the spectacular Adriatic coast. Inland, near the border with Bosnia-Herzegovina, lies **Plitvice Lakes National Park**, an extraordinary grouping of sixteen lakes separated by natural travertine dams and connected by a multitude of cascading waterfalls tumbling lake to lake from the highest in elevation to the lowest some 3000 feet nearer sea level (*right*). **Another UNESCO World Heritage Site**, the lakes differ in color from **azure** to **green** to vivid **blue** depending on mineral content, moss, algae, and sunlight. They vary in depth from little more than three feet to more than 150 feet and the greatest of the falls is over 250 feet! Heavily forested with beech and fir, the area hosts a rich **biodiversity** of flora and fauna, everything from indigenous brown bears to capercaillies (a large species of grouse), ranunculi scutati to dozens of varieties of orchid.



So, if you fancy Roman ruins, if you love to wander medieval lanes, if your soul expands in the beauty of nature, you will find **joy in exploring** Croatia. Land cost: **\$2499** per person double occupancy (\$50 less than were you to sign up online!). Contact Thomas Travel regarding airfare. Please put in your **deposit of \$250** right away – no time to lose! Final payment is due January 30, 2014.

Questions? Call co-Activities Coördinator Michele, 801-582-2806,
or call Thomas Travel directly at **801-266-2775**, and ask for **Monica** to sign up today!

PTC Preview Performance
February 20, 2014 (Tickets Available February 10)



By William Shakespeare

“I wonder that you will still be talking, Signor Benedick; nobody marks you.”

So begins one of the most exuberant and spirited battles of the sexes ever written, starring Beatrice and Benedick, two people who claim to thoroughly detest one another. But under the barbs they hurl at one another lie feelings that neither is even aware of—until circumstances bring them together to rescue their young friends.

Remaining PTC Season Schedule 2013-2014

Plays	Tickets Available**	Preview Performance Dates
Deathtrap	March 10, 2014	March 27, 2014
Sweet Charity	April 14, 2014	May 8, 2014

** Because the mailing dates of the newsletter have changed to follow our luncheons on the second Tuesday of the month, the Newsletter often arrives later than the first available ticket date for the performances. **Please “clip” the schedule and mark your calendars as reminders of the first available date to obtain tickets.**

School of Music Vouchers

If you have School of Music Vouchers, you may attend events sponsored by Music for \$1.00 per person. Henry Wolking has vouchers and you may contact him at the luncheon, or call 801-664-8147, or email henry.wolking@utah.edu. Here are a few select concerts in February:

Wind Ensemble	Tuesday February 4 7:30	Libby Gardner Hall
Campus Symphony	Wednesday February 12 7:30	Libby Gardner Hall
Utah Chamber Artists w/U Chamber Choir	Monday February 24 7:30	Libby Gardner Hall
Jazz Big Bands	Tuesday February 25 7:30	Libby Gardner Hall

More event information at <http://music.utah.edu/events.indexphp>

Executive Board 2013-2014

Katherine Carr	President	801-272-1272	mkatherinecarr@msn.com
Julia Kleinschmidt	President-elect	801-599-8367	julia.kleinschmidt@hsc.utah.edu
Ellen King	Secretary	801-583-6941	eaking@xmission.com
Hyrum Higham	Treasurer	801-278-4366	hhigham@msn.com
Don Hague	Past President	801-485-5488	D.Hague@m.cc.utah.edu
Henry Wolking	Special Activities	801-664-8147	henry.wolking@utah.edu
Michele Margetts	Special Activities	801-582-2806	Ielizabethan@comcast.net
Dennis Alexander	Newsletter Editor	801-948-4053	whoof@comcast.net
Ryck Luthi	Email Distribution	801-532-6464	ryckluthi@msn.com

If you have not yet paid dues (once during the academic year), please include them on the Luncheon Reservation Form.

Please remember: If your reservation arrives later than February 5, you will not have luncheon service!!! We are sorry to include such a comment, but timely reservations are imperative to provide the appropriate number of meals for all who have ordered them.

Please cut here ✂*****

Luncheon Reservation Form

Please mail to arrive no later than February 5, Wednesday for our Luncheon
 Tuesday, February 11, 2014, 12:15 p.m. in the Union Building Saltair Room

Name _____ Chicken _____ Veggie Plate _____ Fruit Plate _____

Partner _____ Chicken _____ Veggie Plate _____ Fruit Plate _____

Guest(s) _____ Chicken _____ Veggie Plate _____ Fruit Plate _____

Number attending @ \$15.00 each _____ Luncheon total: \$ _____

Dues for 2013/14 \$10.00 Single or \$20.00 Couple Dues total: \$ _____

Make check payable to: *Professors Emeriti Club.* Total enclosed: \$ _____

**Hyrum Higham
 3636 South 2445 East
 Salt Lake City, UT 84109**